



Washing Machine

FULLY AUTOMATIC



Auto Clean



Hygiene



One Touch Wash

Washing Machine OWNER'S MANUAL

MODEL:
MA100W75
MA100W75/WK/E
MA100W85
MA100W85/WK/E
MA100W95
MA100W95/WK/E

Read This Manual

Use all instructions and explanations on delete installation before use. Follow the instructions carefully. Keep the operation instructions handy for later use. If the product is sold or passed on then ensure that the new owner always receives this manual.

SAFETY INSTRUCTIONS

| | |
|-----------------------------|---|
| ■ Safety instructions | 2 |
|-----------------------------|---|

INSTALLATION

| | |
|--|----|
| ■ Product description | 8 |
| ■ Installation area | 9 |
| ■ Unpacking the washing machine | 9 |
| ■ Levelling the washing machine | 10 |
| ■ Selection of tap | 11 |
| ■ Connection of inlet hose, tap and washing machine... | 11 |

OPERATIONS

| | |
|--|----|
| ■ Preparation before washing..... | 12 |
| ■ Washing | 12 |
| ■ After washing..... | 12 |
| ■ Washing matters needing attention | 13 |
| ■ The usage of detergent and washing powder..... | 13 |
| ■ Control panel | 14 |
| ■ Option..... | 15 |
| ■ Personalized setting of washing program..... | 16 |
| ■ Operations of washing process..... | 16 |
| ■ Washing program table | 17 |

MAINTENANCE

| | |
|---------------------------------------|----|
| ■ Cleaning and care | 18 |
| ■ Cleaning the cabinet..... | 18 |
| ■ Cleaning drain pump filter | 19 |
| ■ Troubleshooting..... | 20 |
| ■ Technical information | 21 |
| ■ Energy efficiency test program..... | 22 |

■ SAFETY INSTRUCTIONS

For your safety, the information in this manual must be followed to minimize the risk of fire or explosion, electric shock, or to prevent property damage, personal injury or loss of life.

- This appliance is not intended for use by persons (including children) with reduced physical, sensory or mental capabilities or lack of experience and knowledge unless they have been given supervision or instruction concerning use of the appliance by a person responsible for their safety.
- Children should be supervised to ensure that they do not play with the appliance.
- If the supply cord is damaged, it must be replaced by the manufacturer, its service agent or similarly qualified persons in order to avoid a hazard.
- The new hose-sets supplied with the appliance are to be used and that old hose-sets should not be reused.
- The openings must not be obstructed by a carpet.
- This appliance is intended to be used in household and similar applications such as:
 - staff kitchen areas in shops, offices and other working environments;
 - farm houses;
 - by clients in hotels, motels and other residential type environments;
 - bed and breakfast type environments;
 - areas for communal use in blocks of flats or in launderettes.

| Model | Washing Capacity | Standard Water Pressure |
|---------------------------|------------------|-------------------------|
| MA100W75 MA100W75/WK/E | 7.5kg | 0.03MPa-0.8MPa |
| MA100W85 MA100W85/WK/E | 8.5kg | 0.03MPa-0.8MPa |
| MA100W95 MA100W95/WK/E | 9.5kg | 0.03MPa-0.8MPa |

Explanation of the symbols:



Warning!

This combination of symbol and signal word indicates a potentially dangerous situation which may result in death or serious injuries unless it's avoided.



Caution!

This combination of symbol and signal word indicates a potentially dangerous situation which may result in slight or minor injuries or damage to property and the environment.



Note!

This combination of symbol and signal word indicates a potentially dangerous situation which may result in slight or minor injuries.



Warning!

The electric shock!

- This appliance is for indoor use only.
- Do not put washing machine at humid place.
- Hands shall not be inserted into running spin-dry tub .
- If the spin-dry tub does not stop within 15 seconds after opening the cover , please stop using the machine and have it repaired.
- Before any maintenance the device, unplug the appliance from the mains.
- Always unplug the machine and turn off the water supply after use. The max. inlet water pressure, in pascals. The min. inlet water pressure, in pascals.
- To ensure your safety, power plug must be inserted into an earthed three-pole socket. Check carefully and make sure that your socket is properly and reliably earthed.
- Make sure that the water and electrical devices must be connected by a qualified technician in accordance with the manufacturer's instructions and local safety regulations.

Risk to children!

- EN countries: the appliance can be used by children aged from 8 years and above and persons with reduced physical, sensory or mental capabilities or lack of experience and knowledge if they have been given supervision or instruction concerning use of the appliance in a safe way and understand the hazards involved. Children shall not play with the appliance. Cleaning and user maintenance shall not be made by children without supervision.
- Animals and children may climb into the machine. Check the machine before every operation.
- Young children should be supervised that they do not play with the appliance.
- Machine may be very hot during the operation. Keep kids and pets far away from the machine during the operation very wet rooms as well as in the rooms with explosive or caustic gas.
- **Remove all packages before using the appliance. Otherwise, serious damage may result.**
- The washing machine with single inlet valve only can be connected to the cold water supply. The product with double inlet valves should be correctly connected to the hot water and cold water supply.
- Plug must be accessible after installation.

Risk of explosion!

- Do not wash or dry articles that have been cleaned in, washed in, soaked in, or dabbed with combustible or explosive substances(such as wax, oil, paint, gasoline, degreasers, dry-cleaning solvents, kerosene, etc.) This may result in fire or explosion.
- Before hand thoroughly rinse items of washing by hand.



Caution

Installing the product!

- This washing machine is for indoor use only.
- It isn't intended to be built-in using.
- The openings must not be obstructed by a carpet.
- Washing machine shall not be installed in bath room or very wet rooms as well as in the rooms with explosive or caustic gases.
- Remove all packages and transport bolts before using the appliance. Otherwise, serious damage may result.
- The washing machine with single inlet valve only can be connected to the cold water supply. The product with double inlet valves should be correctly connected to the hot water and cold water supply.
- Plug must be accessible after installation.

Risk of damaging appliance!

- Your product is only for home use and is only designed for the textiles suitable for machine washing.
- Do not climb up and sit on top cover of the machine.
- Do not lean against machine door.
- Cautions during Handling Machine:
 - 1.Transport bolts shall be reinstalled to the machine by a specialized person.
 - 2.The accumulated water shall be drained out of the machine.
 - 3.Handle the machine carefully. Never hold each protruded part on the machine while lifting. Machine door can not be used as the handle during the conveyance.
 - 4.This appliance is heavy. Transport with care.

- Please do not close the door with excessive forces.
- It is forbidden to wash carpets.

Operating the appliance!

- Before washing the clothes at first time, the product shall be operated in one round of the whole procedures without the clothes inside.
- Flammable and explosive or toxic solvents are forbidden. Gasoline and alcohol etc. Shall not be used as detergents. Please only select the detergents suitable for machine washing, especially for drum.
- Make sure that all pockets are emptied. Sharp and rigid items such as coin, brooch, nail, screw or stone etc. may cause serious damages to this machine.
- Please check whether the water inside the drum has been drained before opening its door. Please do not open the door if there is any water visible.
- Be careful of burning when the product drains hot washing water.
- Never refill the water by hand during washing.
- After the program is completed, Please wait for two minutes to open the door.

Packaging/Old appliance

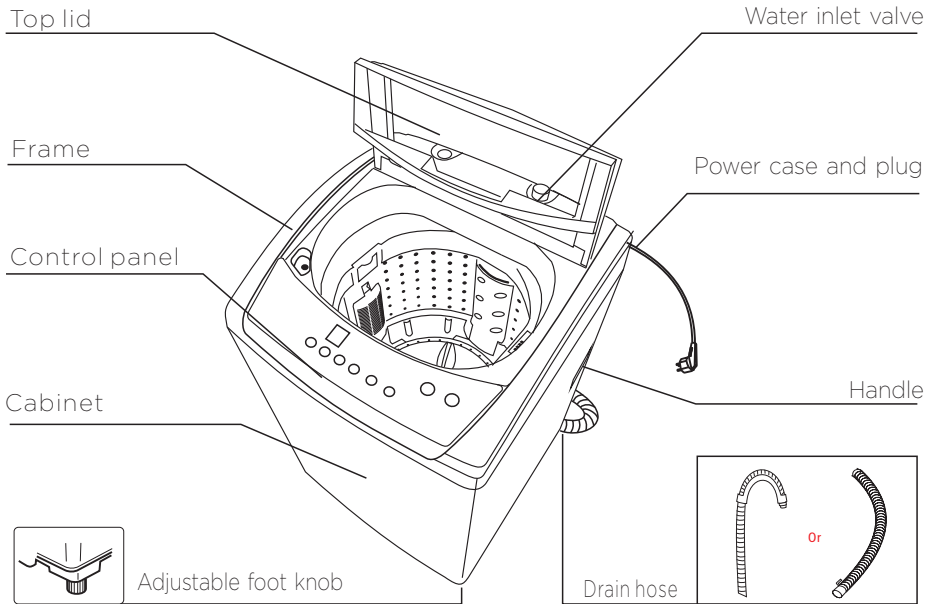


This marking indicates that this product should not be disposed with other household wastes throughout the EU. To prevent possible harm to the environment or human health from uncontrolled waste disposal, recycle it responsibly to promote the sustainable reuse of material resources. To return your used device, please use the collection systems or contact the retailer where the product was purchased. They return and can take this product for environmental safe recycling.

INSTALLATION



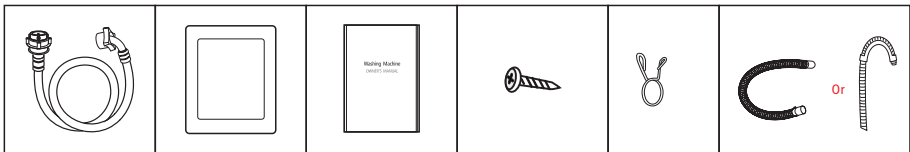
■ Product description



Note!

- The product line chart is for reference only, please refer to real product as standard.

Accessories



Inlet hose ass

cabinet baseboard

manual

screw

spring clasper

drain loose ass

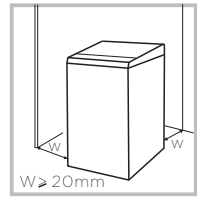
Note!

- Note: if the drain hose is already installed on the machine, then there is no spring clasper and drain hose in the accessories.

■ Installation area

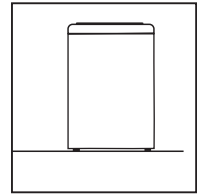
⚠ Warning!

- Stability is important to prevent the product from wandering!
- Make sure that the product should not stand on the power cord.



Before installing the machine, the location characterized as follows shall be selected:

1. Rigid, dry, and level surface
2. Avoid direct sunlight
3. Sufficient ventilation
4. Room temperature is above 0 °C
5. Keep far away from the heat resources such as coal or gas.

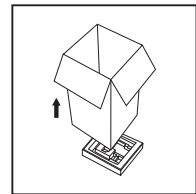


■ Unpacking the washing machine

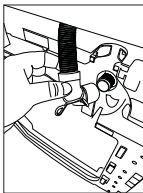
⚠ Warning!

- Packaging material (e.g. Films, Styrofoam) can be dangerous for children.
- There is a risk of suffocation! Keep all packaging well away from children.

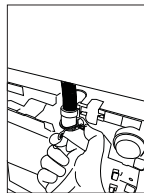
1. Remove the cardboard box and styrofoam packing.
2. Lift the washing machine and remove the base packing.
3. Remove the tape securing the power supply cord and drain hose.
4. Remove the inlet hose from the drum.



■ The installation of drain hose



Drain hose inserted into the drain



Clamping spring

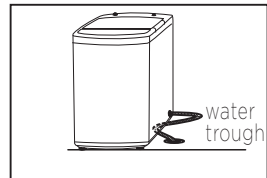
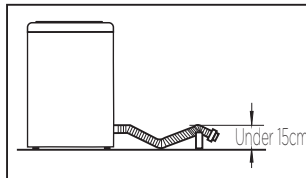
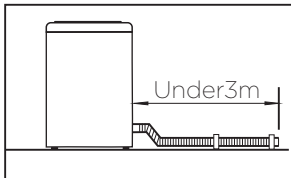
INSTALLATION

⚠ Warning!

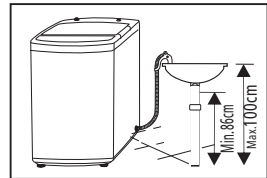
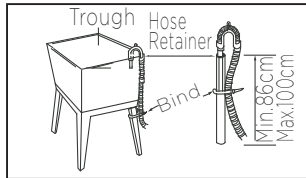
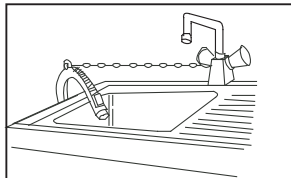
- Do not kink or protract the drain hose.
- Position drain hose properly ,otherwise damage might result of water leakage.
- If drain hose is too long, do not force it into washing machine as it will cause abnormal noises.

There are two ways to place the end of drain hose:

1.For lower drain system



2.For upper drain system

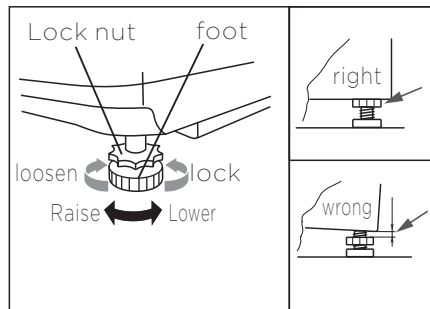


■ Levelling the washing machine

⚠ Warning!

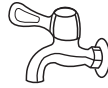
- The lock nuts on all four feet must be screwed tightly against the housing.

- 1.Check if the legs are closely attached to the cabinet. If not, please turn them to their original positions tighten the nuts.
- 2.Check alignment of the product with a spirit level and if required, correct.
- 3.Loosen the lock nut and turn the feet until it closely contacts with the floor.
- 4.After being locked properly, press four corners again to make sure that they has been adjusted properly.



■ Selection of tap

Please select appropriate tap.



Ordinary faucet



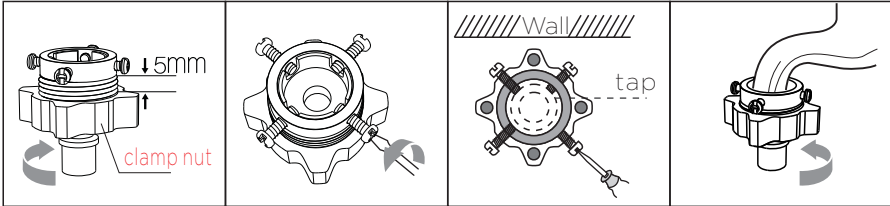
Screw tap



Special washing machine tap

■ Connection of inlet hose, tap and washing machine

1: Connection between ordinary tap and inlet hose.

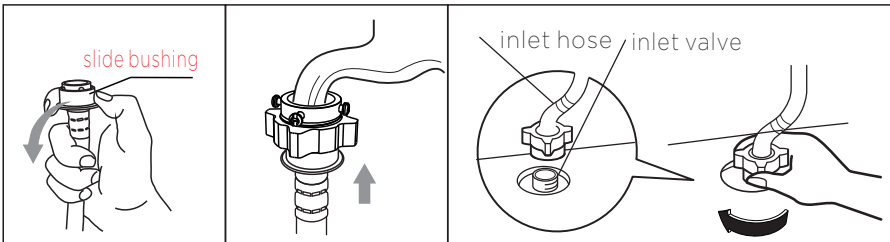


1. Loosen clamp nut to show 5mm thread

2. Loosen four bolts

3. Set connecting base on tap and tighten bolts evenly

4. Tighten clamp nut

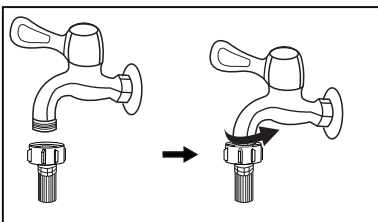


5. Press slide bushing, insert inlet hose into connecting base

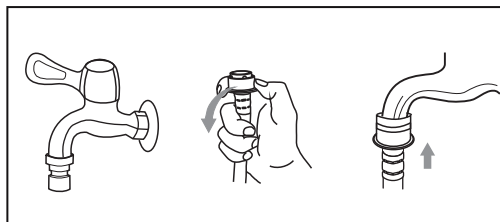
6. Connection finished

7. After connection and installation, check if there is water leakage

2: Connection between screw tap and inlet hose.



tap with threads and inlet hose



special tap for washing machine

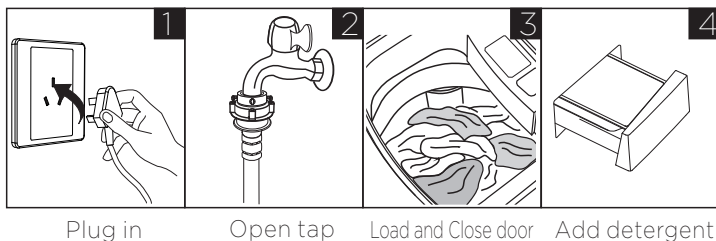
⚠ Warning!

- To prevent leakage or water damage, follow the instructions in this chapter!
- Do not kink, crush, modify or sever water inlet hose.

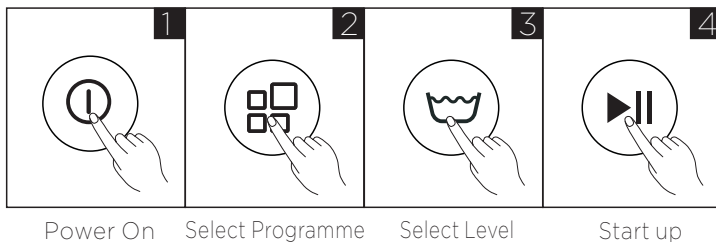
■ Preparation before washing

⚠ Caution!

- Before washing, please make sure it's installed properly.
- Before washing it at first time, the washing machine shall be operated in one round of the whole procedures without clothes in as follows.



■ Washing



📌 Note!

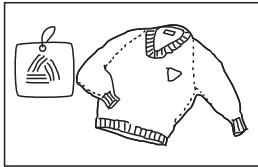
- If default is selected, step 2, 3 can be skipped.

■ After washing

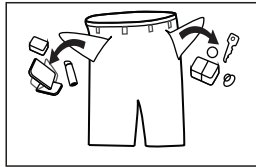
Buzzer will beep after washing finished and the power supply will be cut off automatically. Then unload the laundry.

■ Washing matters needing attention

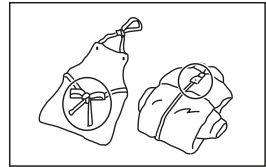
- The working condition of the washer should be (0-40)°C. If used under 0°C, the inlet valve and draining system may be damaged. If the machine is placed under condition of 0°C or less, then it should be transferred to normal ambient temperature to ensure the water supply hose and drain hose are not frozen before use.
- Please check the labels and the explanation of using detergent before wash. Use non-foaming or less-foaming detergent suitable for machine washing properly.



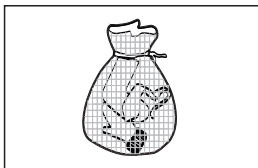
Check the label



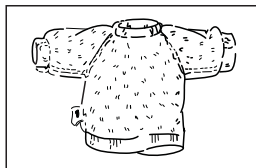
Take out the items out of the pockets



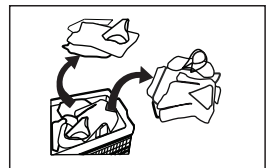
Knot the long strips, zip or button



Put small clothes into the pillow slip



Turn easy-pilling and long-pile fabric inside out



Separate clothes with different textures

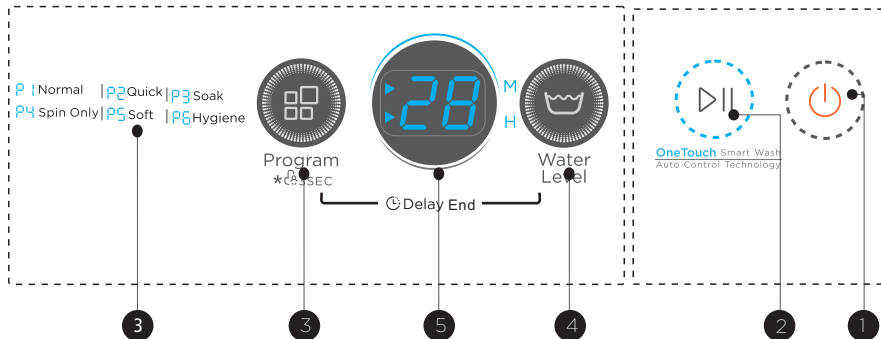
⚠ Warning!

- When washing a single clothes, it may easily cause great eccentricity and give alarm due to great unbalance. Therefore it is suggested to add one or two more clothes to be washed together so that draining can be done smoothly.
- Don't washing the clothes touching with kerosene, gasoline, alcohol and other flammable materials.

■ The usage of detergent and washing powder

- As for the agglomerated or ropy detergent or additive, before they are poured into the detergent box, it is suggested to use some water for dilution to prevent the inlet of detergent box from being blocked and overflowing while filling water.
- Please choose suitable type of detergent for the various washing temperature to get the best washing performance with less water and energy consumption.

■ Control panel



Note!

- The chart is for reference only, Please refer to real product as standard.

1 On/Off

Product is switched on or off.

2 Start/Pause

Press the button to start or pause the washing cycle.

3 Program

Available according to the laundry type.

4 Option

This allows you to select an additional function and will light when selected.

5 Display

The display shows the settings, estimated time remaining, options, and status messages for your washer. The display will remain on through the cycle.

When LED flashing ,it means the time that delay to start the machine. When LED lighting ,it means the program time that remaining.

■ Option

Only for washers having these function.



Water level

select water level according to clothing categories, degree of soiling and washing habits of customers



Delay

1. Select a program
2. Press the Delay button to choose the time
3. Press [Start/Pause] to commence the delay operation



Press the [Delay] button until the Delay light is off. It should be pressed before starting the program. If the program already started, should press the [On/Off] button to reset the program.

Caution!

- If there is any break in the power supply while the machine is operating, a special memory stores the selected program and when the power is restarted.

■ Personalized setting of washing program

Customers can select washing program according to actual demand, and set water volume and appointment time

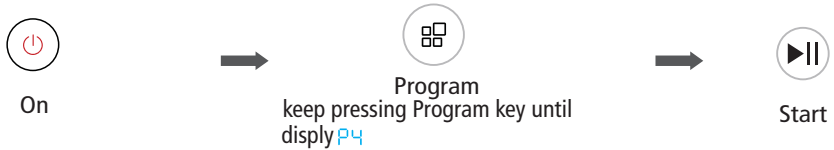


■ Operations of washing process

One Touch Smart Wash



Spin only



Note!

- Note: other process combinations are just like above.

■ Washing program table

Program are available according to the laundry type.
Only for washers having these function

| Program | |
|-----------|--|
| Quick | Suitable to wash light stained clothes and clothes in summer. |
| Soft: | the tempo is soft, slow washing and spinning speed, to make the lightest wear and deformation. |
| Normal | Standard fabric washing program, suitable to wash ramie cotton fabric. Wash for once, rinsing for twice, the spin time is a little long. |
| Hygiene | This program is able to effectively remove mites in clothes. |
| Soak | Select this program if clothes need to be soaked before washing. |
| Spin only | Select this program to Spin and drain only . |

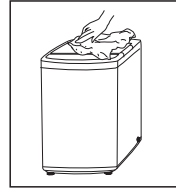
■ Cleaning and care

⚠ Warning!

- Before your maintenance starts, please unplug the machine and close the tap.

■ Cleaning the cabinet

Proper maintenance on the washing machine can extend its working life. The surface can be cleaned with diluted non-abrasive neutral detergents when necessary. If there is any water overflow, use the wet cloth to wipe it off immediately. No sharp items are allowed.



📌 Note!

- Formic acid and its diluted solvents or equivalent are forbidden, such as alcohol, solvents or chemical products, etc.

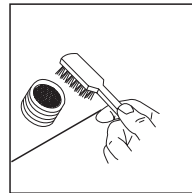
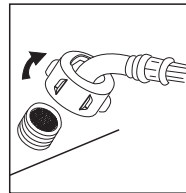
■ Cleaning the inlet filter

📌 Note!

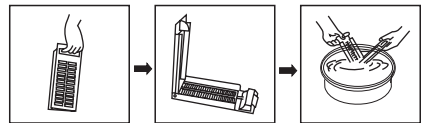
- Inlet filter must be cleaned if there is less water.

Washing the filter in washing machine:

- 1.Screw off the inlet pipe from the backside of the machine.
- 2.Pull out the filter with long nose pliers and reinstall it back after being washed.
- 3.Use the brush to clean the filter.
- 4.Reconnect the inlet pipe.



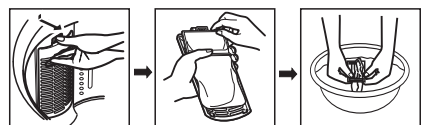
magic filter



Lint filter clean

- 1.There is a built-in lint filter in your washer. It can help to collect lint during washing cycle.
- 2.It is suggested to clean the lint filter every 10 cycles.
- 3.Take it out and clean the filter with water. Then place it back into the washer.

normal filter

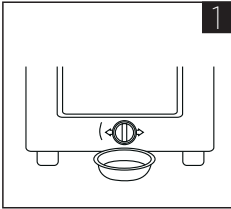


■ Cleaning drain pump filter

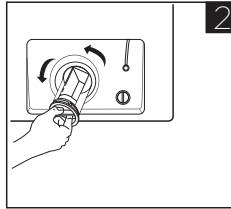
Only for washers having these function.

⚠ Warning!

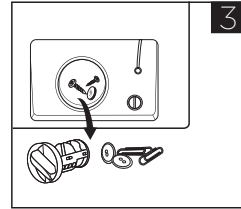
- Be careful of the hot water!
- Allow detergent solution to cool down.
- Unplug the machine to avoid electrical shock before washing.
- Drain pump filter can filter the yarns and small foreign matters from the washing.
- Clean the filter periodically to ensure the normal operation of washing machine.



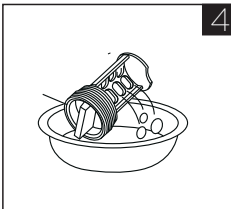
1 Drain the water out of the pump, under which use a container to collect.



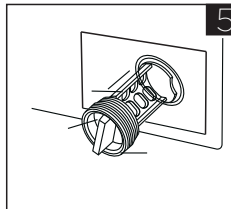
2 Open the filter by turning to the counter clockwise



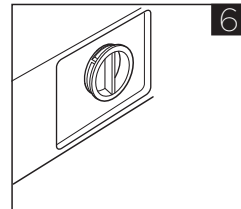
3 Remove extraneous matter



4 Clean the filter.



5 Restore it and adjust the convex place to align at the pump hole.



6 Tighten the pump cover clockwise.

⚠ Caution!

- Make sure that valve cap and emergency drain hose are reinstalled properly, cap plates should be inserted aligning to hole plates otherwise water may leak;
- When the appliance is in use and depending on the program selected there can be hot water in the pump. Never remove the pump cover during a wash cycle, always wait until the appliance has finished the cycle, and is empty. When replacing the cover, ensure it is securely re-tightened.

■ Troubleshooting

The start of the appliance does not work or it stops during operation. First try to find a solution to the problem, If not, contact the service centre.

| Description | Inspection Items |
|-------------------|---|
| No washing | If the power is off or the fuse is burned out. If the power supply voltage is too low. If the water amount reaches to the required water level.(The washer will not work if the water amount does not reach the required water level) If it is set to "Delay" washing mode. (It will only start to work until the reservation time reached) |
| No water flows in | If the power is off or the fuse is burned out. If the water supply is cut off or the water pressure is too low. If the inlet hose is properly connected and the water tap is opened. If the filtering screen of inlet valve is blocked by dirt. If the coil of inlet valve is damaged. (The slight electromagnetic sound is normal phenomenon when the inlet valve is switched on) If the "Start / Pause" button is pressed after the power switch is pressed. |
| Abnormal draining | If the water drain hose is placed very high. If the end of water drain hose is sealed in pond. If the internal rubber ring of drain valve is blocked by dirt. |
| Abnormal spin | If the door lid is closed. If all clothing piled largely at one side of barrel or the clothing is excessively placed. If the washer is not placed in stable condition or it is placed in inclination state. (The ground is not flat). If the motor belt is loosened. |

| Description | Reason | Solution |
|-------------|--|--|
| E1 | Alarm for abnormal water intaking. | Check the water tap is opened or not. |
| E2 | Alarm for water drain has not finished. | Check the water level sensor and drain pump. |
| E3 | Alarm for lid not closed before wash and spin. | Close the lid, Press "Start" button |
| E4 | Alarm for washing stay at one side. | Manually balance clothes in the barrel by hands. |
| EXX | Others | Please try again first, call up service line if there are still troubles |

Note!

- After the check, activate the appliance. If the problem occurs or the display shows other alarm codes again, contact the service.

■ Technical Information

Standard Water Pressure 0.03MPa-0.8MPa

| Model | Washing Capacity | Dimension (W*D*H:mm) | Net Weight | Rated Power | Power Supply |
|---------------------------|------------------|----------------------|------------|-------------|----------------|
| MA100W75 MA100W75/WK/E | 7.5kg | 515x525x890 | 29kg | 400W | 230-240V~,50Hz |
| MA100W85 MA100W85/WK/E | 8.5kg | 515x525x900 | 30kg | 400W | 230-240V~,50Hz |
| MA100W95 MA100W95/WK/E | 9.5kg | 550x565x900 | 33kg | 450W | 230-240V~,50Hz |

■ Energy efficiency test program:

Entry mode of energy efficiency program in Malaysia

1: Press the "ON/OFF" button

2: Press the "program" button, to select the "Normal" program (display P1), and press the water level key to set the level 8 (display L8)

3: Press the "start" button to start the operation

Entry mode of water consumption procedure in Singapore

1: Press the "ON/OFF" button

2: Press the "program" button, to select the "Quick" program (display P2),

3: Press the "start" button to start the operation

Note!

- Do not operate operations not mentioned in the above steps



QUESTIONS OR COMMENTS

| Country | Contact Center | Web Site |
|-------------|----------------|---|
| Thailand | +6621077799 | http://www.midea.com/th |
| Myanmar | +09260367229 | https://www.gbs.com.mm/en/about/vsk/ |
| Cambodia | +85523212435 | http://bluemidea.com |
| Vietnam | +1800588863 | http://vn.midea.com |
| Philippines | +63288635522 | http://www.mideaph.com |
| Indonesian | +628001888523 | http://id.midea.com |
| Malaysia | +60392211033 | https://www.midea.com/my/ |
| Singapore | +62222536 | https://www.midea.com/sg/ |

This product is RoHS compliant.



make yourself at home

V1.0

16138000A38905