

---

# **MIDEA MITE CLEANER**

## OPERATION INSTRUCTIONS MANUAL

---

MVC-B500VM



Midea Scott & English Electronics Sdn Bhd,16,  
Jalan Chan Sow Lin,  
55200 Kuala Lumpur.  
<https://my.midea.com>



Please read this Instruction Manual carefully before operating, and keep it properly.

## SAFETY INSTRUCTIONS



### Contents

|                      |    |
|----------------------|----|
| Safety Introduction  | 1  |
| Product Introduction | 2  |
| Product Operation    | 4  |
| Product Maintenance  | 6  |
| Troubleshooting      | 10 |

The appliance is not to be used by persons (including children) with reduced physical, sensory or mental capabilities, or lack of experience and knowledge, unless they have been given supervision or instruction. Children being supervised not to play with the appliance

If the supply cord is damaged, it must be replaced by the manufacturer, its service agent or similarly qualified persons in order to avoid a hazard.

WARNING — This appliance contains a UV emitter. Do not stare at the light source

- Do not place the machine close to heat sources, radiation, or burning cigarette.

Do not use the appliance to remove the following objects:

1. All liquids such as water and solvents.
2. Lime, cement, ash and other construction dust and garbage.
3. Hot objects, such as cigarette butts.
4. Sharp objects, such as glass shards, etc.
5. Inflammable and explosive articles, such as gasoline or alcohol products.

- Do not let children play with or operate the machine to prevent accidents.

- Your machine is an electric appliance: It must be used appropriately.  
Do not leave the machine unattended.

- The power must be turned off during cleaning, maintenance or when in storage.

- Do not pull the power plug to turn off the appliance.  
Hold the plastic part of the plug to remove it from the power socket.

- The power supply voltage must correspond to that of the machine using voltage.

- Keep the power cord away from sharp objects to prevent it from being damaged.

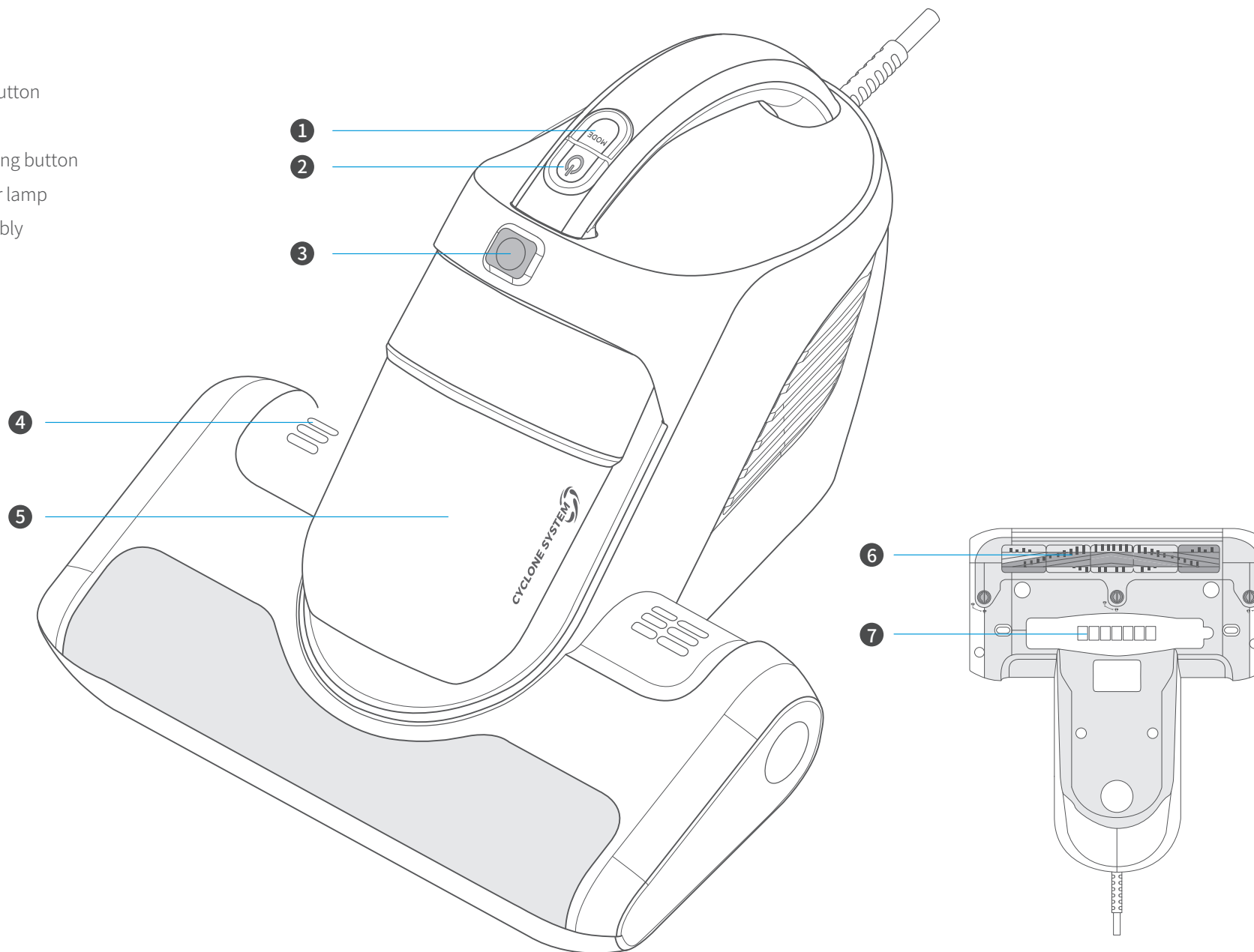
- To prevent fires do not immerse the machine using in water, do not expose it to any heating appliances.

- In the case of below situations do not use the machine and send it immediately to the nearest approved maintenance facility:

- The appliance fell and consequently damaged.
- The power cord is damaged.

- Stop operating the machine if the suction inlet is blocked to prevent damages (such as overheating) to the motor or deformations to the vacuum plastic parts occasioned by overheating motor.

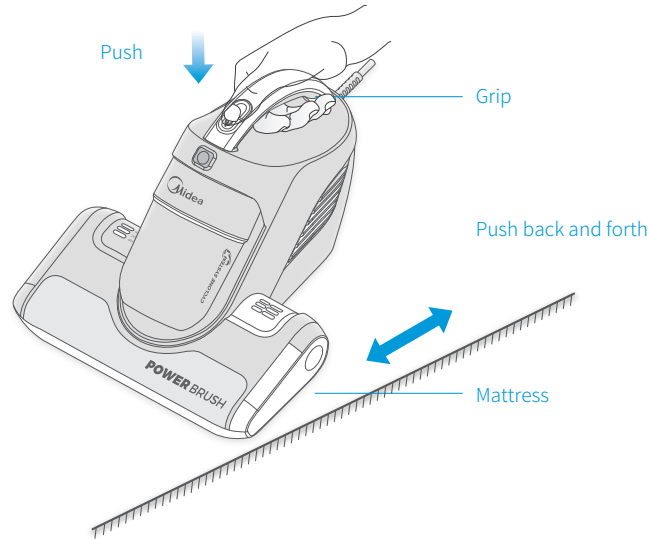
- ① Mode switch button
- ② Switch button
- ③ Dustbin releasing button
- ④ Mode Indicator lamp
- ⑤ Dustbin assembly
- ⑥ Brushroll
- ⑦ UV lamp



## Product Operation

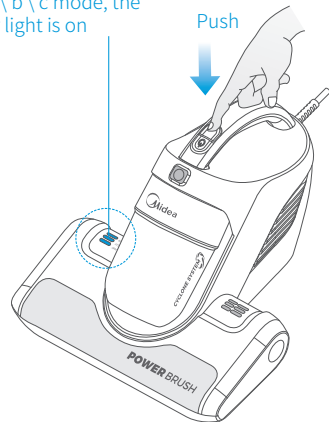
### Cleaning

Put the mite cleaner on the mattress, press and hold the start button, and push back and forth to achieve cleaning.



**Sweep mode switch:** press the mode switch button, switching a \ b \ c mode successively

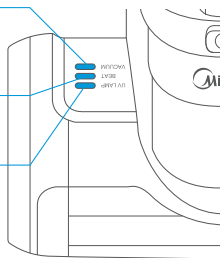
Switch a \ b \ c mode, the indicator light is on



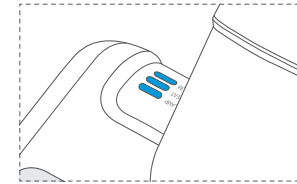
Instruction for vacuuming

Beating instruction

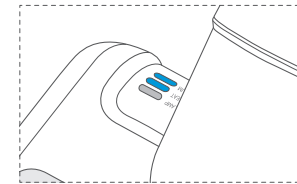
Instruction for cleaning mites



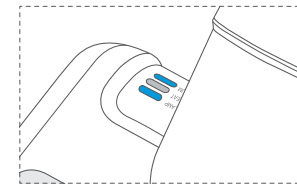
- a. Vacuuming + beating + mite cleaning mode: this mode is default by mite cleaner when the machine begins to work in pressing the switch button.



- b. Vacuuming + beating mode: press the mode switch button, and it will convert to this mode in the event of a mode in the open state.



- c. Vacuuming + mite cleaning mode: press the mode switch button, and it will convert to this mode in the event of b mode in the open state.



### ! Caution

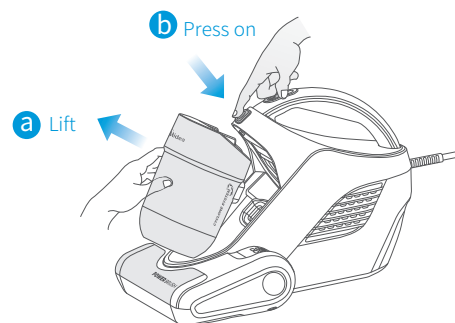
1. Do not irradiate human body as UV lamp is harmful.
2. If the lamp is found broken in the use, please contact the sales staff to replace the lamp do not replace it on your own.
3. The lamp should be 5-10CM from irradiated objects and tilt angle shouldn't exceed 30° to ensure proper operation.

## Product Maintenance:

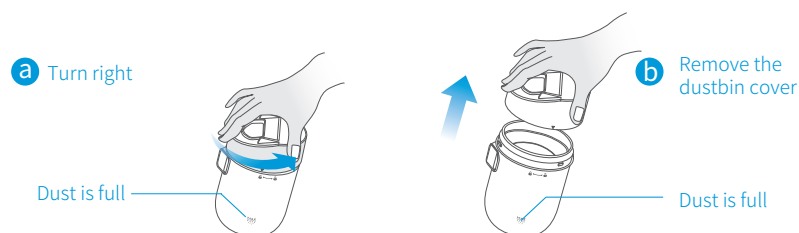
### Dustbin cleaning :

Please remove the dust regularly to ensure constant suction.

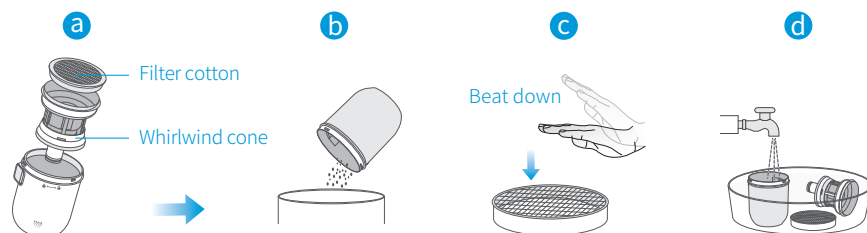
01. Press the dustbin release button and remove the dustbin in the direction of the arrow.



02. Rotate it to the right and remove the dustbin cover.



03. Remove the filter cotton and whirlwind cone; clean the whirlwind cone and beat the filter cotton down. (Do not beat along the reverse).



04. After each part dried completely and assemble it in accordance with the disassembling steps.

Tips : aboved steps are suggested after each dustbin empty; Filter cotton should be replaced in the designated place after its use times are accumulated in 30-50h.

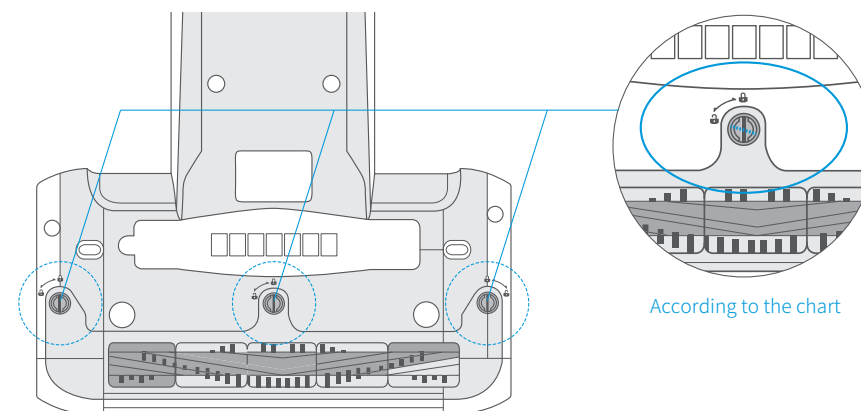
### ⚠ Caution

1. Be sure to turn off the machine and unplug the power plug before removing the cup.
2. To prevent injuries handle with care.
3. Ensure each part dried completely before next usage.
4. Do not scrub the filter or apply undue force.
5. Ensure filter is correctly secured during assembly.
6. Change the filter if damaged or if cleaning does not return it to its pristine state.

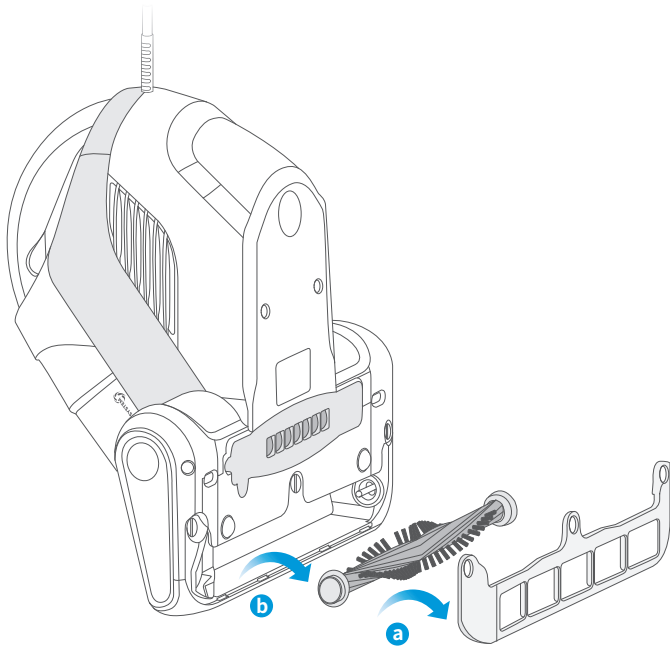
### Brushroll cleaning:

In order to avoid the impact of mite brushroll peration, when the mite brushroll was wrapped or dirty, please clean and maintain it.

01. Use a screwdriver or coin to rotate the lock catch to the left from "🔒" to "🔓".



02. Remove the brushroll and brushroll cover to clean, and assemble it in accordance with the disassembling steps.



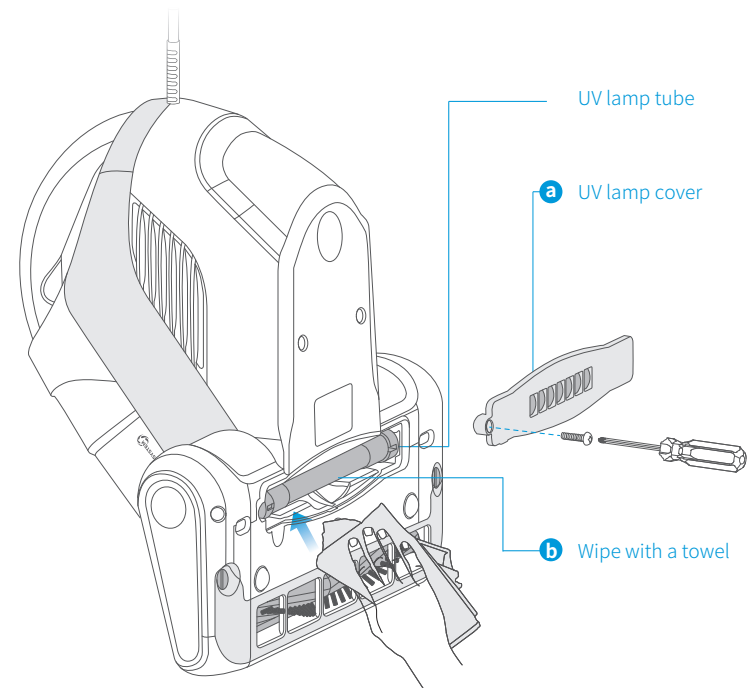
**Caution**

1. Before disassembling the lock catch and brushroll, be sure to turn off the machine and unplug the power plug.
2. When the brush duct is blocked by dust, clear with disposable chopsticks.
3. Except roller brush and the brush cap, no part can be washed with water.
4. Do not apply oil on both ends of the mite brush.
5. Ensure filter is correctly secured during assembly.
6. Do not touch the electric brush in the bottom or the outlet of the device in the running process.

## UV lamp cleaning

In order to make the UV lamp with the better mite-eliminating effect, please regularly clean and wipe.

Remove the screws in UV lamp cover with a cross screwdriver, and gently wipe the surface of the UV lamp with a dry towel after removing the UV lamp cover. after finishing the cleaning, assemble it in accordance with the reverse order of disassembling.



**Caution**

1. Before cleaning the UV lamp, make sure to turn off the machine and unplug the power plug.

## TROUBLESHOOTING

In case of malfunction, please refer to the following table.

| Problem                                     | Possible causes   | Solution   |
|---|---|--|
| <b>Suction power becomes weak</b>           | <ul style="list-style-type: none"> <li>- Too much dust in the cup</li> <li>- Cotton filter is blocked</li> <li>- Brush duct is blocked</li> <li>- Hasn't been fully dried after washing</li> </ul>  | <ul style="list-style-type: none"> <li>- Clean in time</li> <li>- Wash the cotton filter</li> <li>- Clear the blockage</li> <li>- Dry the parts in cool place after washing</li> </ul>   |
| <b>UV lamp does not work</b>                | <ul style="list-style-type: none"> <li>- Be far away from cleaning objects</li> <li>- The machine is placed erectly</li> <li>- The transparency on the infrared probe at the bottom of the machine</li> <li>- UV lamp is damaged</li> </ul> | <ul style="list-style-type: none"> <li>- Under normal circumstances, the machine will automatically open the UV lamp when the distance for the cleaning object is within 5CM</li> <li>- The title angle of machine is not more than 30 degrees</li> <li>- Clean the transparency with a dry cotton cloth</li> <li>- Contact the after-sale for replacing the lamp</li> </ul> |
| <b>The brushroll suddenly stops working</b> | <ul style="list-style-type: none"> <li>- Brushroll is wrapped by the foreign body</li> <li>- The belt is fell off or broken</li> </ul>  | <ul style="list-style-type: none"> <li>- Cleaning the brushroll</li> <li>- Open the brushroll cover and inspect whether the belt is fell off or broken</li> </ul>  |
| <b>The machine does not work</b>            | <ul style="list-style-type: none"> <li>- The power plugs are loose on the socket or the power socket is not live</li> <li>- The switch fails to be opened</li> </ul>  | <ul style="list-style-type: none"> <li>- Inspect whether power plugs are tight or not or the socket is live or not</li> <li>- Press down the switch button</li> </ul>  |
| <b>The machine suddenly stops</b>           | <ul style="list-style-type: none"> <li>- The dust cup is full</li> <li>- The suction of the machine is blocked</li> <li>- Filter cotton is blocked by foreign matter</li> </ul>   | <p>In order to prevent the overheating motor of product, the safety mechanism for preventing overheating is added, if this event is happened, please unplug the power, and clean up the obstruction, suspending it for two hours before use</p>  |

For other failures, please contact the local service outlet