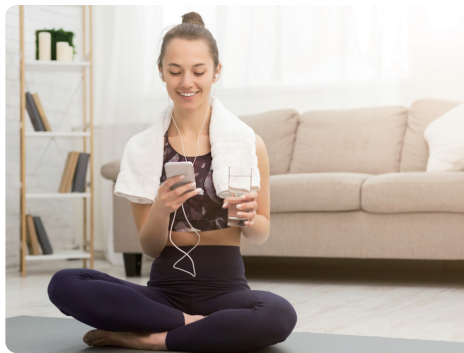
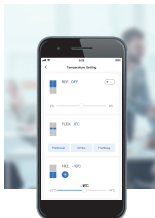


Connected  
to your home



## SMART CONTROL



### Remote Control

Temperature adjustment  
Open up different mode



### Door-unclosed APP Alarm

Send a reminder when the door is not closed properly, reducing the energy-wasting.

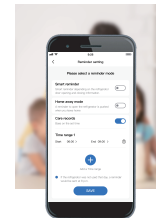
## LIFE ASSISTANT



### Aftersales

Common FAQ  
Contact number  
E-Manual

## FAMILY CARE



### Home Care

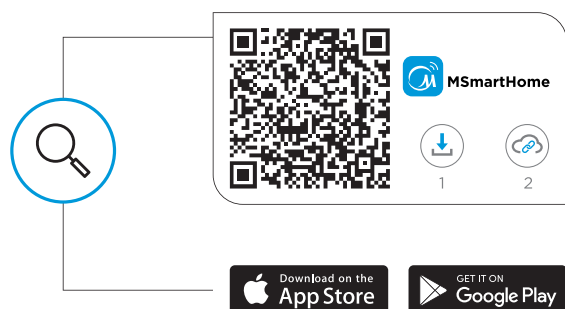
Smart reminder  
Home away mode  
Custom reminder

\* The schedule for each feature's availability may vary by country or region.

1

## Download the MSmartHome App

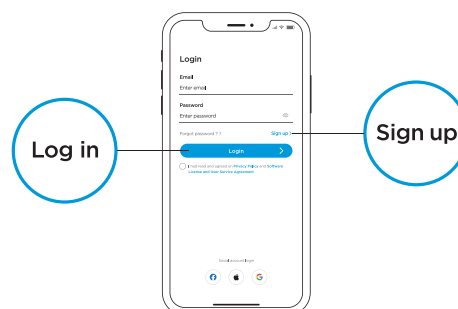
Scan QR code or find us on your app store



2

## Register and log in

Log in for existing users or sign up for new users



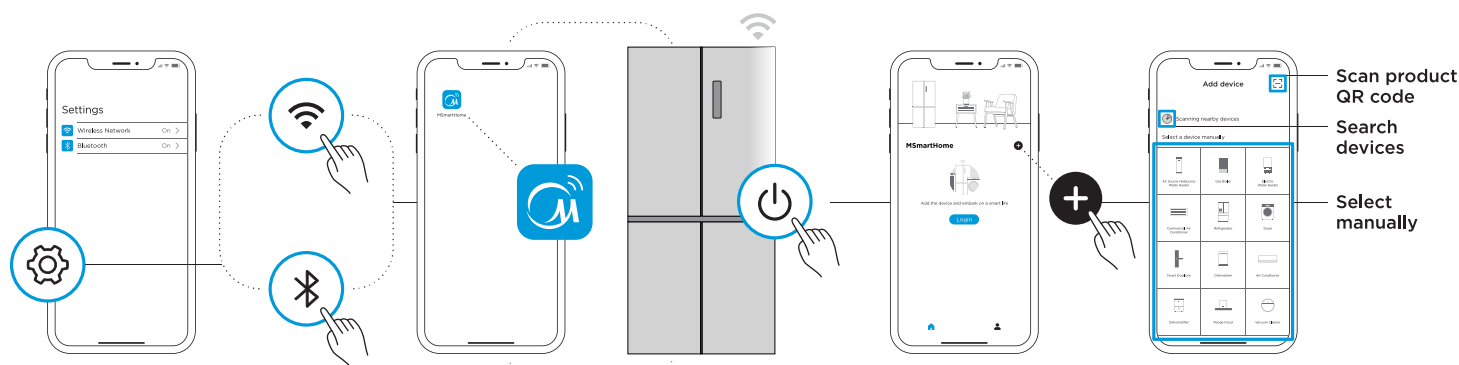
3

## Connect your devices to MSmartHome

**A.** Connect to wireless network and enable Bluetooth

**B.** Open MSmartHome app. Power on selected device

**C.** Add your device using one of the following methods:



## Quick Tips

- Make sure your devices are powered on.
- Keep your mobile phone close to your device during connection.
- Connect your mobile phone to the wireless network at home.
- Enable the 2.4GHz frequency on your wireless network router. Contact the manufacturer if unsure whether the router supports 2.4GHz.
- The device is unable to connect to wireless network that requires authentication and also appears in public areas such as hotels and restaurants.
- It is recommended to use a wireless network name that only contains letters and numbers. If your wireless network name contains special characters, modify it in the router. Disable WLAN+ (Android) or WLAN Assistant (iOS) when connecting your devices to the network.
- To reconnect a device to the wireless network, click "+" on the app home screen and add the device again by the category and model according to the app prompts.