

重点校对项

1. 物料编码

2. 版面尺寸

3. 材质标注

4. 颜色标注

5. 客户型号

6. 产品名称

7. 产品参数

8. 电压功率

9. 单位符号

10. 认证标志

11. 回型标志

12. ROHS标志

13. 警语警语及字高

14. 控制面板及功能

15. 目录及页码

16. 商标LOGO

1 2 3 4 5 6

标准元素核对表（此表仅用于印刷品制作过程核对标准内容，非印刷内容）

认证图标	
单位表述	直流电: V= 交流电: V- 频率: Hz 功率: W 容量: mL/L 电流: A 压强: Pa/kPa/MPa 长度: mm/cm/m 时间: s/min/h 重量: kg
产地表述	MADE IN CHINA Made in China Made in P.R.C
变更要求	图纸变更需要核实变更内容点以及涉及的物料和M0单，尤其关注92的在途M0单

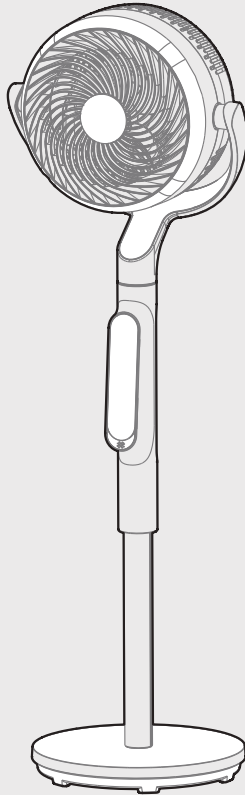
带语音 带香薰选配

技术要求(版本号:B, 2023-06)

- 文字图案印刷颜色为: 黑色, 印刷字体需清晰可见, 文字不能粘到一起;
- 该说明书的幅面大小为: A5, 未注直线尺寸公差应符合GB/T1804-v;
- 该说明书的装订方式为: 钉装; [70P以下为钉装, 70P以上为胶装(特殊要求除外)]
- 说明书警语及认证标志应满足CE/UL标准, CE: 警语部分大写字母高度不低于3mm, CE标志不低于5mm, WEEE标志不低于7mm; UL: 大写字母字高不小于1/12”(2.11mm), 小写字母字高不小于1/16”(1.6mm), “IMPORTANT SAFEGUARDS”, “SAVE THESE INSTRUCTIONS”等词, 其字高不小于3/16”(4.8mm), IMPORTANT SAFEGUARDS 必须在最前面。
- 产品应符合QMG-J53.021《产品说明书技术条件》的有关要求。
- 有ROHS指令要求的物料应符合美的企业标准QML-J11.006《产品中限制使用有害物质的技术标准》。

				电风扇		22056021001081	
				说明书		FG18-26XRDV-SMS_01 CB认证 带语音 带香薰选配	
标记	处数	更改文件号	签字	日期	图样标记	重量	比例
制图	颜雅丽	审核	李艳		K	/	1:1
设计	颜雅丽	标准化	古广君		材料: 80g双胶纸		
校对	王志达	审定	古广君		广东美的生活电器制造有限公司		
会签	吴孔升	日期	2025-08-22	共 1 页	第 1 页		

1 2 3 4 5 6



AIR CIRCULATION FAN

USER MANUAL

FS07-26VSG

Warning notices: Before using this product, please read this manual carefully and keep it for future reference. The design and specifications are subject to change without prior notice for product improvement. Consult with your dealer or manufacturer for details. The diagram above is just for reference. Please take the appearance of the actual product as the standard.

THANK YOU LETTER

Thank you for choosing Midea! Before using your new Midea product, please read this manual thoroughly to ensure that you know how to operate the features and functions that your new appliance offers in a safe way.

CONTENTS

THANK YOU LETTER	01
SAFETY INSTRUCTIONS	02
SPECIFICATIONS	04
PRODUCT OVERVIEW	05
PRODUCT INSTALLATION	06
OPERATION INSTRUCTIONS	07
VOICE CONTROL	10
CLEANING AND MAINTENANCE	12
TROUBLESHOOTING	12
TRADEMARKS, COPYRIGHTS AND LEGAL STATEMENT	13
DATA PROTECTION NOTICE	13

SAFETY INSTRUCTIONS

Intended Use

The following safety guidelines are intended to prevent unforeseen risks or damage from unsafe or incorrect operation of the appliance. Please check the packaging and appliance on arrival to make sure everything is intact to ensure safe operation. If you find any damage, please contact the retailer or dealer. Please note modifications or alterations to the appliance are not allowed for your safety concern. Unintended use may cause hazards and loss of warranty claims.

Explanation of Symbols



Danger

This symbol indicates that there are dangers to the life and health of persons due to extremely flammable gas.



Warning of electrical voltage

This symbol indicates that there is a danger to life and health of persons due to voltage.



Warning

The signal word indicates a hazard with a medium level of risk which, if not avoided, may result in death or serious injury.



Caution

The signal word indicates a hazard with a low degree of risk which, if not avoided, may result in minor or moderate injury.



Attention

The signal word indicates important information ((e.g., damage to property), but not danger.



Observe instructions

This symbol indicates that a service technician should only operate and maintain this appliance in accordance with the operating instructions.

Read these operating instructions carefully and attentively before using/commissioning the unit and keep them in the immediate vicinity of the installation site or unit for later use!

Important Safeguards

READ AND SAVE THESE INSTRUCTIONS

CAUTION

- Read Rules for Safe Operation and Instructions Carefully.
- This appliance is not intended for use by persons (including children) with reduced physical, sensory or mental capabilities, or lack of experience and knowledge, unless they have been given supervision or instruction concerning use of the appliance by a person responsible for their safety.
- Children should be supervised to ensure that they do not play with the appliance.
- Never insert fingers, pencils, or any other object through the grille when fan is running.
- Disconnect fan when moving from one location to another.
- Be sure fan is on a stable surface when operating to avoid overturning.
- DO NOT use fan in window, rain may create electrical hazard.
- This appliance is for household use only.

WARNING

- If the supply cord is damaged, it must be replaced by the manufacturer, its service agent or similarly qualified persons in order to avoid a hazard.
- To protect against the risk of electrical shock, do not immerse the unit, cord or plug in water or other liquid.
- When the appliance is not in use and before cleaning, unplug the appliance from the outlet.

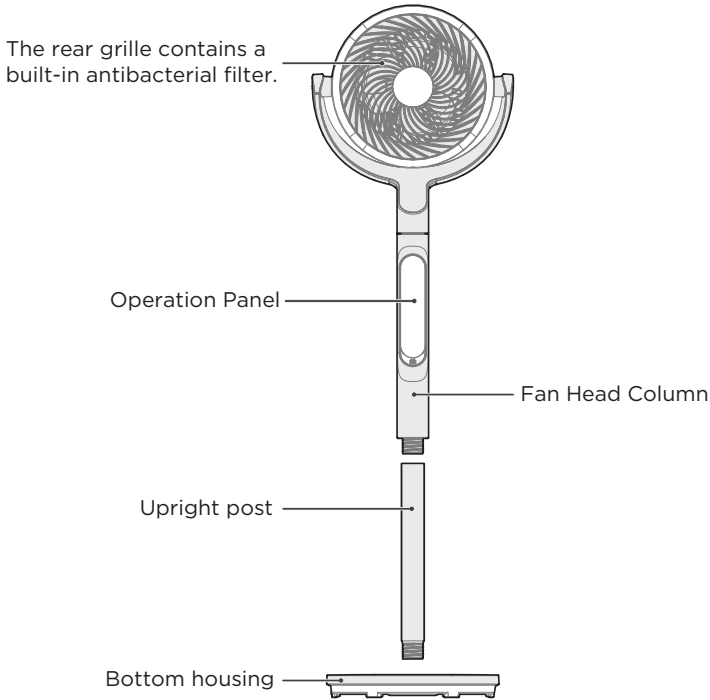
- When the fan was assembled, the rotor blade guard shall not be taken off anymore.
 - Unplug fan before cleaning.
 - The rotor guard shall not be disassembled/opened to clean the rotor blades.
 - Wipe the fan enclosure and rotor blade guard with a slightly damp cloth.

SPECIFICATIONS

Product Model	FS07-26VSG
Voltage	220-240V-
Frequency	50/60Hz
Power	18W

PRODUCT OVERVIEW

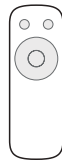
Part Name



Part List



User Manual x1



Remote control x1



Battery x2

NOTE

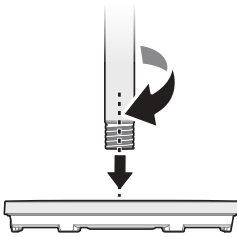
All the pictures in this manual are for explanation purpose only. Any discrepancy between the real object and the illustration in the drawing shall be subject to the real subject.

PRODUCT INSTALLATION

1 Column Installation

Align the column and base connector, then turn clockwise to tighten and secure.

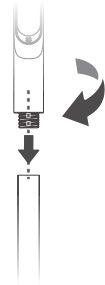
Figure 1



2 Fan Head Column Installation

Align the fan head column with column connector, then turn clockwise to tighten and secure.

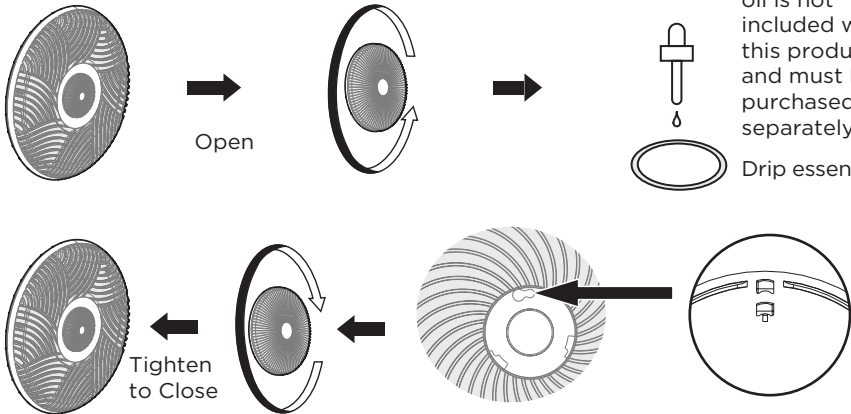
Figure 2



3 Add Aromatherapy

Turn the aromatherapy cover in the center of the rear grille counterclockwise to open it, drop essential oil (floral water) on the cotton piece in the center of the rear mesh cover, then align the aromatherapy cover and press it lightly, assemble it according to the alignment mark, and tighten it clockwise to close it.

Figure 3



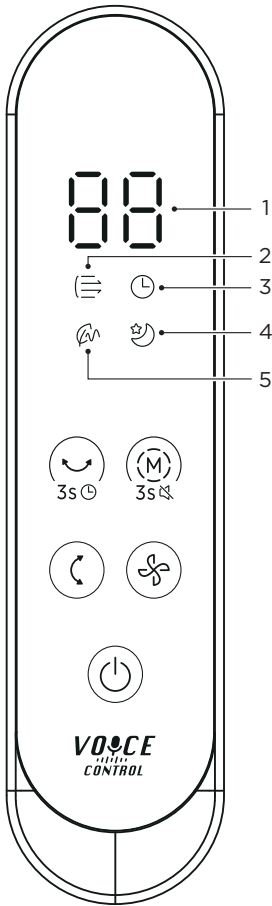
Note: Essential oil is not included with this product and must be purchased separately.

Drip essential oil

First insert the column into the large round hole according to the alignment mark, and then rotate it clockwise.

OPERATION INSTRUCTIONS

Operation Area and Display Area

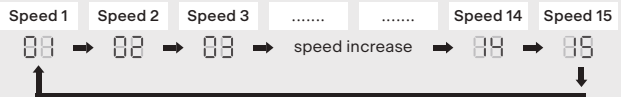


Display Area

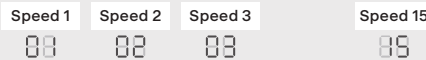
No	Icon	Function Description
1		<p>Dual 8-digit digital display tube</p> <ul style="list-style-type: none"> • Display timer on/off duration, fault code, and fan speed level, oscillation angle. • When the device is powered on, if the left/right oscillation angle is set, the dual 8-digit display tube will display the corresponding oscillation angle ("00" indicates a 30° oscillation angle, "00" indicates a 60° oscillation angle, "00" indicates a 120° oscillation angle). If the up/down oscillation angle is set, the dual 8-digit display tube will display the corresponding oscillation angle ("00" indicates a 30° oscillation angle, "00" indicates a 60° oscillation angle, "00" indicates a 135° oscillation angle).
2		• Turbo Wind mode indicator light
3		• Timer indicator light
4		• Sleep Wind mode indicator light
5		• Natural Wind mode indicator light

Wind Speed Light

- In Normal Wind mode, the fan speed will cycle through settings 1 to 15.



- In Natural Wind/Sleep Wind mode, the fan speed will cycle through settings 1 to 3.
- In Turbo Wind mode, only the highest fan speed will be displayed.

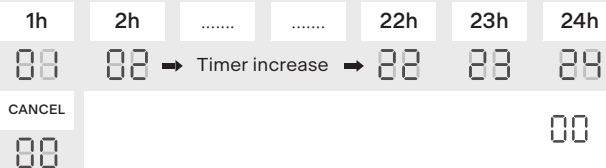


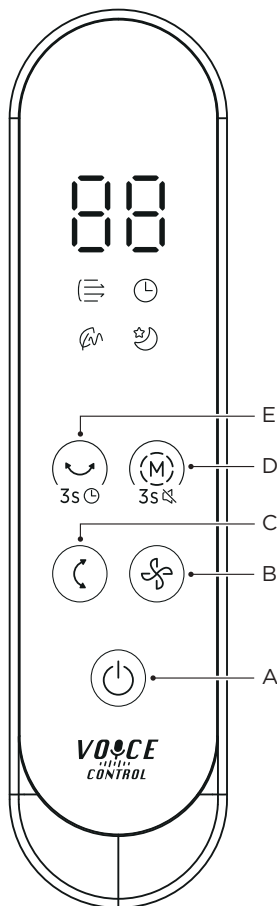
Additional Function

Screen off function

- If there is no operation for 30 seconds after the previous operation, the display will automatically turn off.

Timer Light





Additional Function

Auto power-off

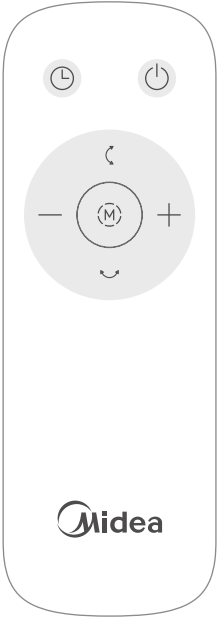
- The fan will automatically shut down if there is no operation after 24 hours of continuous operation.

Operating Button

No	Button	Function Description
A		<p>Power Button</p> <ul style="list-style-type: none"> In Standby mode, press this button lightly to start the device. In the power-on state, a short press of this button will enter Standby mode.
B		<p>Wind Speed Button</p> <ul style="list-style-type: none"> In Normal Wind mode, a short press of the button cycles through speeds 1 to 15. In Natural Wind mode, a short press of the button cycles through speeds 1 to 3. In Sleep Wind mode, a short press of the button cycles through speeds 1 to 3. In Turbo Wind mode, the speed is fixed at the highest setting and cannot be adjusted.
C		<p>Up And Down Oscillation Button</p> <ul style="list-style-type: none"> In the power-on state, short press the button to cycle through oscillation angles: 30° → 60° → 135° → Stop → 30°. In setting mode, the angle can be adjusted cyclically. If no further settings are made, the system will automatically exit the setting state after about 3 seconds. After exiting the setting state, pressing the button can turn off the oscillation function. After turning off the oscillation function, pressing the button within about 3 seconds will resume the oscillation mode; pressing the button after more than 3 seconds will restore the oscillation angle to the original setting.
D		<p>Wind Mode/Mute Button</p> <p>1. Wind Mode Selection</p> <ul style="list-style-type: none"> When the device is on, short press the button to cycle through the wind modes: Normal → Natural → Sleep → Turbo. <p>2. Mute Setting</p> <ul style="list-style-type: none"> Press and hold the Wind Mode button for 3 seconds to turn the buzzer on or off.
E		<p>Left/Right Oscillation/Timer Button</p> <p>1. Left/Right Oscillation Angle Setting</p> <ul style="list-style-type: none"> In the power-on state, short press the button to cycle through oscillation angles: 30° → 60° → 120° → stop → 30°. In setting mode, the angle can be adjusted cyclically. If no further settings are made, the system will automatically exit the setting state after about 3 seconds. After exiting the setting state, pressing the button can turn off the oscillation function. After turning off the oscillation function, pressing the button within about 3 seconds will resume the oscillation mode; pressing the button after more than 3 seconds will restore the oscillation angle to the original setting. <p>2. Timer Setting</p> <ul style="list-style-type: none"> Press and hold the button for about 3 seconds to enter the Timer setting mode. In Timer setting mode, short press the button to set a 1-24 hour timer to power off.

Remote Controller

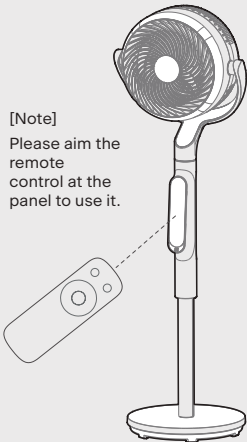
- Point the remote controller at the receptor on body of the fan and press the desired button. The remote controller will work at distances of up to roughly 5 meters and the angle of 30 degree included between right and left from the receptor.
- The batteries must be removed from the remote controller before it is scrapped and that they are disposed of safely.



Button	Function Description
	Power Button <ul style="list-style-type: none"> • In Standby mode, press this button lightly to start the device. • In the power-on state, briefly press this button to enter Standby mode.
	Up And Down Oscillation Button <ul style="list-style-type: none"> • Short press the button to cycle through the oscillation angles: 30° → 60° → 135° → Stop → 30°. • The function is the same as the panel operation.
	Oscillation (left-right swing) button <ul style="list-style-type: none"> • Short press the button to cycle through the oscillation angles: 30° → 60° → 120° → Stop → 30°. • The timer function cannot be set. Other functions and panel operations are consistent.
	Timer Button <ul style="list-style-type: none"> • Whether the device is on or off, short press this button to set a timed power-off.
	Increase “+”/ Decrease “-” Button <ul style="list-style-type: none"> • Adjust the speed and timer duration. Turbo Wind mode is not available.
	Wind Mode Button <ul style="list-style-type: none"> • Short press the button to cycle through wind modes: Normal → Natural → Sleep → Turbo.

Figure 4

[Note]
Please aim the remote control at the panel to use it.



Battery Installation

- Slide the battery compartment cover.
- Insert the batteries, and make sure that the batteries are placed as shown in the Figure 5.
- Slide back the battery cover.

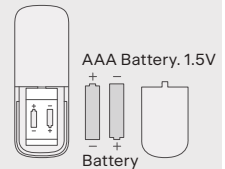
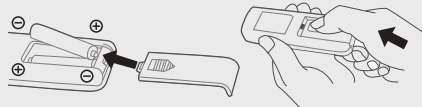


Figure 5



[Note]

- Do not dispose of batteries in fire, batteries may explode or leak.
- Do not mix old and new batteries.
- Do not mix alkaline, standard (carbon-zinc) or rechargeable (nickel-cadmium) batteries.
- Pay attention to poles (+ and -) of the batteries.
- Non-rechargeable batteries are not to be recharged.
- Rechargeable batteries are to be removed from the appliance before being charged.
- If the appliance is to be stored unused for a long period, the batteries should be removed.
- The supply terminals are not to be short-circuited.

VOICE CONTROL

Function	Recommended Command Words	Machine Response Words
Wake-up Word	Hi/hello, Midea (['Maɪdiə] ['Mi:diə])	Yes/Hello/What can I do for you
Power On	Turn On Fan	OK
Power Off	Turn Off Fan	OK
Swinging Head	Oscillation On	OK
	Oscillation Off	OK
	Left And Right Oscillation On	OK
	Left And Right Oscillation Off	OK
	Up And Down Oscillation On	OK
	Up And Down Oscillation Off	OK
Wind Speed	Fan Speed Low	OK
	Fan Speed Medium	OK
	Fan Speed High	OK
	Increase Fan Speed	OK
	Decrease Fan Speed	OK
	Fan Speed One	OK
	Fan Speed Two	OK
	Fan Speed Three	OK
	Fan Speed Four	OK
	Fan Speed Five	OK
	Fan Speed Six	OK
	Fan Speed Seven	OK
	Fan Speed Eight	OK
	Fan Speed Nine	OK
	Fan Speed Ten	OK
Fan Speed Eleven	OK	
Fan Speed Twelve	OK	
Fan Speed Thirteen	OK	
Fan Speed Fourteen	OK	
Fan Speed Fifteen	OK	

Function	Recommended Command Words	Machine Response Words
Mode	Sleep Mode	OK
	Normal Wind	OK
	Natural Wind	OK
	Turbo Wind	OK
Timed Power Off	Turn Off After One Hour	OK
	Turn Off After Two Hours	OK
	Turn Off After Three Hours	OK
	Turn Off After Four Hours	OK
	Turn Off After Five Hours	OK
	Turn Off After Six Hours	OK
	Turn Off After Seven Hours	OK
	Turn Off After Eight Hours	OK
	Turn Off After Nine Hours	OK
	Turn Off After Ten Hours	OK
	Turn Off After Eleven Hours	OK
	Turn Off After Twelve Hours	OK
	Turn Off After Thirteen Hours	OK
	Turn Off After Fourteen Hours	OK
	Turn Off After Fifteen Hours	OK
	Turn Off After Sixteen Hours	OK
	Turn Off After Seventeen Hours	OK
	Turn Off After Eighteen Hours	OK
	Turn Off After Nineteen Hours	OK
	Turn Off After Twenty Hours	OK
	Turn Off After Twenty One Hours	OK
	Turn Off After Twenty Two Hours	OK
Turn Off After Twenty Three Hours	OK	
Turn Off After Twenty Four Hours	OK	
Stop Timer	OK	
Voice Prompt Function On/Off	Turn On Voice Broadcast	OK
	Turn Off Voice Broadcast	OK
Volume Adjustment	Increase Volume	OK
	Decrease Volume	OK

CLEANING AND MAINTENANCE

- Be sure to unplug from the electrical supply source before cleaning.
- Please use a damp cloth or sponge for general cleaning.
- To remove more persistent dirt, use a cloth dampened with warm soapy water. Then use a dampened cloth with water only to remove soap film. Do not use any solvents (such as thinners), as they may damage the plastic housing.
- Do not allow water or other liquids to enter inside the fan motor.
- After cleaning and maintenance, be sure to wait until fully dry before using or storing.




TROUBLESHOOTING

Operation of your appliance can lead to errors and malfunctions. The following tables contain possible causes and notes for resolving an error message or malfunction. It is recommended to read the table below carefully in order to save your time and money that may cost for calling to the service center.

Problem	Cause	Solution
The machine does not work properly after installed	• The power cable is not plugged in or has poor contact.	Make sure the plug is properly inserted into the socket.
	• The switch on the body is not turned on.	Turn on the switch on the body.
The remote does not work	• The battery needs replacing.	Replace the battery.
	• The remote is being used more than 5m away from the machine.	Use the remote closer to the machine and make sure it is pointing directly at the display panel.

TRADEMARKS, COPYRIGHTS AND LEGAL STATEMENT

 Midea logo, word marks, trade name, trade dress and all versions thereof are valuable assets of Midea Group and/or its affiliates (“Midea”), to which Midea owns trademarks, copyrights and other intellectual property rights, and all goodwill derived from using any part of an Midea trademark. Use of Midea trademark for commercial purposes without the prior written consent of Midea may constitute trademark infringement or unfair competition in violation of relevant laws.

This manual is created by Midea and Midea reserves all copyrights thereof. No entity or individual may use, duplicate, modify, distribute in whole or in part this manual, or bundle or sell with other products without the prior written consent of Midea.

All the described functions and instructions were up to date at the time of printing this manual. However, the actual product may vary due to improved functions and designs.

DATA PROTECTION NOTICE

For the provision of the services agreed with the customer, we agree to comply without restriction with all stipulations of applicable data protection law, in line with agreed countries within which services to the customer will be delivered, as well as, where applicable, the EU General Data Protection Regulation (GDPR).

Generally, our data processing is to fulfil our obligation under contract with you and for product safety reasons, to safeguard your rights in connection with warranty and product registration questions. In some cases, but only if appropriate data protection is ensured, personal data might be transferred to recipients located outside of the European Economic Area.

Further information is provided on request. You can contact our Data Protection Officer via MideaDPO@midea.com. To exercise your rights such as right to object your personal data being processed for direct marketing purposes, please contact us via MideaDPO@midea.com. To find further information, please follow the QR Code.



make yourself at home



www.midea.com

© Midea 2022 all rights reserved